

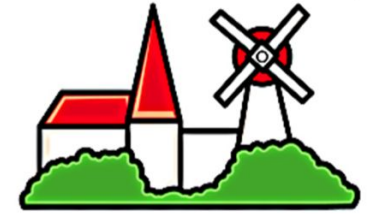
Woodchurch Church of England Primary School

„Let your light shine...“

Newsletter 6

21 November 2025

www.woodchurch.kent.sch.uk



Woodchurch CE Primary School



Woodchurch CE Primary School



@WoodchurchCEP



office@woodchurch.kent.sch.uk



01233 860232

Dear Parents and Carers,

This term is now in full swing and I would like to take a moment to thank our wonderful team for all that they do for the children and families at Woodchurch Primary. I am incredibly proud of the calm, friendly and welcoming spaces that have been created around the school, and of the hard work that goes into planning such engaging and creative lessons. Over the past two weeks I've spent a great deal of time in classrooms, and it has been a delight to see our younger children proudly demonstrating their writing skills, while our older children confidently share their knowledge in their Connected Curriculum lessons.

We have also enjoyed several events that truly reflect the strength of our school community. Our Remembrance Day observance was marked with great respect and maturity. The morning worship gave us an opportunity to talk about the importance of the day, and the two minutes' silence allowed everyone time to pause, think and reflect. For Children in Need, our school showed incredible generosity in supporting such a worthy cause, and we all enjoyed the energetic Dance Dash led by the Homewood students. You'll find photos from both events later in the newsletter. We are also looking forward to seeing lots of families at the Christmas Light Switch-On on Saturday 29th November from 3–6pm, where our choir will be performing just before the lights are switched on at 5pm.

Our website focus for this edition looks at our curriculum coverage. You can explore what your child is currently learning—and what is coming up later in the year—by visiting our Curriculum Overview page. Why not take a moment to look at the individual subject pages too? They give a fantastic insight into the breadth and depth of learning across the school.

Warm wishes,
Mrs Ridley

Head of School





Celebration Awards



Well done to all award winners!

Learner of the week:

Hedgehog Class: Betsy & Merlin

Rabbit Class: Darcie

Woodpecker Class: Nancy & Ruby

Blackbird Class: Miley

Fox Class: Florence & Evie

Squirrel Class: Pippa & Violet

Owl Class: Logan & Henry

Vision & Values awards:

Hedgehog Class: Tommy & Sofia

Rabbit Class: Poppy P

Woodpecker Class: Freddie & Tommy

Blackbird Class: Adelaide & Bettina

Fox Class: Phoebe

Squirrel Class: Huxley

Owl Class: Whole Class & Lena

Diary Dates

Thursday 4 December	Online Christingle Service- 2.30pm
Friday 5 December	FOWSA Christmas Movie 
Tuesday 9 December	KS1 Nativity - 6pm evening performance 
Wednesday 10 December	KS1 Nativity - 1.45pm afternoon performance
Thursday 11 December	Christmas Lunch 
Friday 12 December	Christmas Jumper Day  Christmas Panto - Whole School Visit
Monday 15 December	KS2 Carol Service (Church) 9am
Thursday 18 December	Christmas church service 9am
Friday 19 December	FOWSA Christmas Raffle Christmas parties Last day of Term 2 
Monday 5 January	Inset Day
Tuesday 6 January	Start of Term 3



FOWSA run a second hand uniform shop offering a low cost, more sustainable option. Second hand items are in good used condition and are priced at £1.

The school page is here:

https://www.grownoutofit.co.uk/school/Woodchurch_Church_of_England_Primary_School/10994

When you have placed your order you will receive a message asking you to confirm if you wish to collect from the school office or have your items given to the child to bring home. You will receive email notification for the message so please check your junk mail.

FOWSA will endeavour to have your item(s) ready within 3 school days.



Attendance

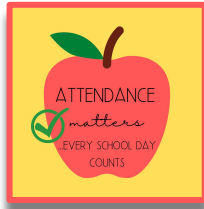
Here are the latest attendance figures for school (year to date)

EYFS	1	2	3	4	5	6
94%	94.1%	94.2%	94.9%	94.6%	96%	95.4%

Whole school attendance: 94.8%

The DfE has asked schools to share the following guidance with families. Please do ensure you have a read through as it might help you in the future:

<https://www.nhs.uk/live-well/is-my-child-too-ill-for-school/>



What we encourage...



We believe it is vitally important for children to attend school regularly and punctually. This will give them the best opportunity to progress and achieve their full potential. Good attendance and punctuality will also encourage children to become responsible and resilient individuals, which will serve them well in their future working lives.

Every child, in line with the Government's expectations, is expected to maintain a high level of attendance (at least 95%). We hope that you appreciate how crucial good school attendance is to your child's progress, achievement and chances in life and we look forward to working with you to ensure that your child's attendance is the very best it can be.

Benefits of good school attendance

Children with good attendance:

- Feel happier and gain in confidence
- Achieve more academically and keep up with work more easily
- Develop well socially and find it easier to make and keep friends
- Establish good educational habits and routines at an early age
- Are able to make a positive contribution to school life in general
- Are much more settled into school life.
- LEARN!

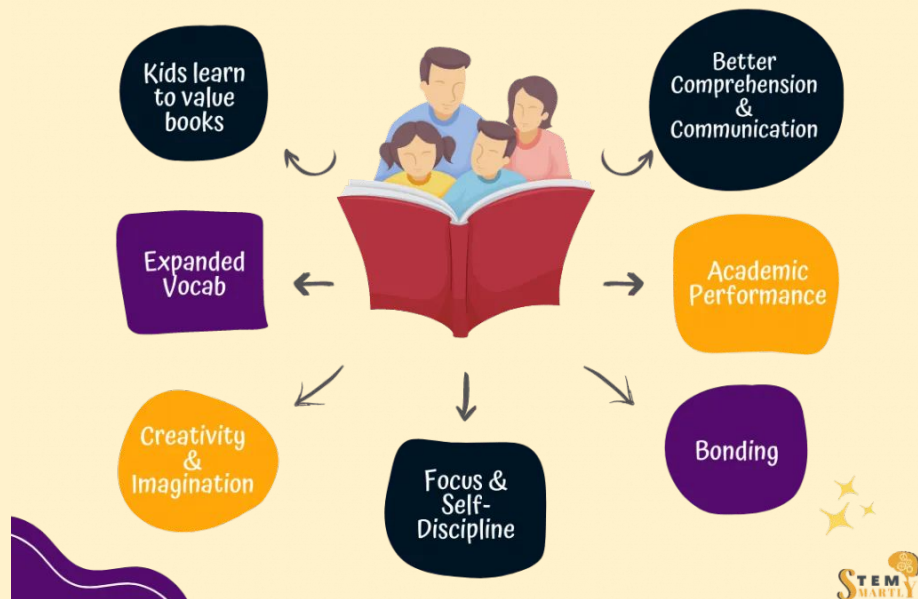
All of these are important life skills for your child



Reading for Pleasure

At Woodchurch Primary, we truly value reading for pleasure. We often talk about the importance of your child reading regularly at home, but it's just as important for parents and carers to read to their children. Sharing stories together not only strengthens reading skills, but also builds imagination, vocabulary, confidence, and a lifelong love of books. The image below highlights just some of the many benefits of reading aloud at home.

Benefit of Reading to Children



Cold Weather

As the colder weather sets in, please ensure your child comes to school with a warm coat and any other items they may need to stay warm. Children spend time outside throughout the day, so appropriate clothing will help keep them comfortable during playtimes and outdoor learning.



*The whole school will be able to enjoy the Jack and the Beanstalk pantomime in December. Please make sure you have made payment via ParentMail
Thank you :)*



Woodchurch made a fantastic effort last week wearing Pudsey themed outfits to raise money for Children in Need. We also had the annual visit from Homewood school performing their Dance Dash which is always something we look forward to and enjoy! Well done everyone :)

There's still time to donate by clicking on Pudsey



LEST WE FORGET

Remembrance Day



Remembrance Day

It was lovely to see so many of our children and families at the memorial for the for the Remembrance Service at All Saints Church. We're so proud of all those who took part, including many representing the Girlguiding and Scouting groups of all ages. A special thank you to Gillian, Max, and Oscar for reading the poems so beautifully and for laying our school wreath with such respect and care. During school time children took part in a range of activities to help children understand the significance of Remembrance Day in age-appropriate and meaningful ways.





FOWSA UPDATE



Winter has well and truly arrived, and we're delighted to share some wonderful news. Thanks to your continued support, we have been able to purchase two new sound systems for the school. One will be put to use very soon, just in time for the Nativity in a couple of weeks, while the second, a mobile system, will be perfect for outdoor events such as Sports Day.

It's fantastic to see the funds raised by our school community making such a positive difference to the children's experiences.

A quick reminder that tickets for the Christmas Movie Afternoon (Friday 5 December) are on sale until Tuesday 2 December, 5pm. We can't wait to get Christmassy with the children!

[https://docs.google.com/forms/d/e/1FAIpQLSctUQ3m-d3-5x9roj\]5OLL37AvFSYEGUyYR_CnUBHOTCae4vg/viewform](https://docs.google.com/forms/d/e/1FAIpQLSctUQ3m-d3-5x9roj]5OLL37AvFSYEGUyYR_CnUBHOTCae4vg/viewform)

Thank you for your continued support.

Your FOWSA Committee, Danielle, Ela and Emma



ROCK STEADY

ROCK AND POP BAND LESSONS!

IGNITE THEIR SELF-BELIEF

- Children learn to play an instrument in their very own band.
- Fun and inclusive in-school band lessons. No music theory involved.
- Follow their musical journey in your Backstage account.
- Exam-free, Ofqual-regulated Trinity music qualification.
- Instruments provided and no experience necessary.

BOOK YOUR CHILD'S PLACE ONLINE

0330 713 0330 (Mon-Thurs 9am-5pm, Fri 9am-6pm, local rate)
rocksteadymusicschool.com

ROCK STEADY

LEARN TO PLAY MUSIC IN A BAND THAT'S FOR EVERYONE.

Choose from: Keyboard, guitar, bass, drums or vocals.

Inclusive and hassle-free! Takes place in school. Instruments provided and no experience necessary!	Have fun and learn by playing! Children work their way through a curriculum of up to 300 musical skills.
Taught by professional musicians Rocksteady band leaders are highly trained musicians who make learning music fun.	Much more than music! Improves wellbeing, confidence, social skills and academic achievement.
Progress at their own pace Your child can achieve an exam-free, Ofqual-regulated Trinity music qualification!	End every term on a high note! Watch your child shine as they perform in their end of term concerts.

START THEIR MUSICAL JOURNEY

0330 713 0330 (Mon-Thurs 9am-5pm, Fri 9am-6pm, local rate)
info@rocksteadymusicschool.com

TRINITY

Community Notice Board

The Big Wrap
www.thebigwrap.co.uk

HOW YOU CAN HELP

Gifts for children
Brand new for ages from baby to 11. For ages 12 upwards toiletry and cosmetic gifts or Amazon Gift Cards value of £15.

Amazon Wishlist
The above QR code takes you to our Wishlist which should be helpful for gift ideas.

Big Wrap Day 29th November 2025 in St Mildred's church
Gift and other donations welcome from 9am and wrapping from 1pm to 3pm
Supporting local families at Christmas

Other Items
We also appreciate any items to support families for everyday living essentials.

Because you never know what troubles the person next door is going through....

The Hygiene Bank Tenterden & Cranbrook

MILDRED TRUST

WI Christmas Market

Saturday 22nd November
The Memorial Hall
10:00am-1:00pm

Craft Stalls
Tombola
Cakes, Pastries, Gifts, cards, and many other different stalls.

This year we will be having a Children's Craft Area and activities: bring your little ones and enjoy a coffee and cake while they are busy.

Come and say 'Hello' to Father Christmas, who will be joining us too!

29th November

Woodchurch Christmas Tree 'switch-on' event

3-6pm

Hot food & drink stalls, local crafts & Village stalls
Childrens activities
Carol singing and so much more!

'Switch-on' 5pm

WOODCHURCH IN BLOSSOM
WOODCHURCH GARDENING SOCIETY

TOTS & TALES

TOTS & TALES CHRISTMAS SPECIAL - WOODCHURCH PRIMARY SCHOOL
JOIN US FOR A MAGICAL MORNING OF FESTIVE FUN, CREATIVITY, AND STORIES!

WEDNESDAY 10TH DECEMBER
9:30 - 10:30 AM

ACTIVITIES INCLUDE:

- REINDEER FOOD MIXING - SCOOP OATS, ECO GLITTER & SEQUINS TO MAKE MAGICAL REINDEER TREATS!
- CHRISTMAS SENSORY BIN - EXPLORE RICE, SNOW, BELLS & PINECONES.
- GLITTERY SNOWFLAKES - CREATE AND DECORATE SPARKLY SNOWFLAKES TO TAKE HOME.
- HAND & FOOTPRINT CRAFTS - MAKE A REINDEER OR FESTIVE KEEPSAKE.
- FINGERPRINT CHRISTMAS LIGHTS - STAMP COLOURFUL "LIGHTS" ALONG THE WIRE!
- BABY CORNER - SHAKE, RATTLE & ROLL WITH HOMEMADE MUSIC SHAKERS!

STORYTIME: THE 12 DAYS OF CHRISTMAS
FESTIVE SONGS & RHYMES TO END OUR SESSION WITH CHEER!

A LOVE OF READING
LEARNING THROUGH PLAY AND DISCOVERY
AMY & HOLLY
LED BY QUALIFIED TEACHERS

WWW.OUTPOSTCHURCH.CO.UK

CAROL SERVICES

2025

OUTPOST CHURCH

CAROLS BY CANDLELIGHT
DEC 14TH
6.30PM - 7.45PM

FAMILY CAROL SERVICE
DEC 21ST
10.30AM - 11.45AM

MULLED WINE, MINCE PIES AND MORE!

NATIVITY, NIBBLES AND PHOTOBOOTH

THE WOODCHURCH COMMUNITY CENTRE
LOWER ROAD, WOODCHURCH, TN26 3SQ



NOURISH

CHRISTMAS MENU

Roast Turkey with Festive Trimmings 1,6

Winter Vegetable Wellington 1 VG

Santa's Cookie 1 VG

Iced Chocolate Sponge 1 VG

Peas, Carrots,
Brussel Sprouts
Rustic Roast Potatoes

Jelly

Fruit Pots VG



Dishes marked with any of the following numbers contain the matching allergen:

1 Wheat Gluten 2 Crustaceans 3 Soybean 4 Mustard 5 Sesame 6 Sulphites/Sulphur Dioxide 7 Milk 8 Fish 9 Egg
10 Peanuts 11 Molluscs 12 Celeriac/Celery 13 Nuts 14 Lupins 15 Oat Gluten 16 Barley Gluten V Vegetarian VG Vegan

Christmas Lunch - Thursday 11 December

Please use the link [here](#) to order

The school caterers, Nourish, require your child to pre book their Christmas lunch. This google form **MUST be completed by Thursday 27 November or you will need to provide your child with a packed lunch on this day.**

Please complete this form for each child even if they are entitled to a free school lunch. If your child pays for school lunches, please make sure their account has been topped up for the Christmas meal. The cost for a single meal is £3.05.

NOVEMBER TO
MARCH 2026

NOURISH
GROW WITH US



MONDAY

TUESDAY

WEDNESDAY

THURSDAY

FRIDAY

WEEK ONE

3 Nov
24 Nov
15 Dec
19 Jan
9 Feb
9 March
30 March

Chicken Pie 1
Pesto & Pea Pasta 1,7 V
Jackets with a Choice of Toppings 7,8,9

Crushed Potato
Cauliflower,
Carrots

Strawberry Mousse 7
Mr Nourish Biscuit 1 VG
Fruit Pots VG

Margherita Pizza 1,3,7 V
Bean Biryani VG
Jackets with a Choice of Toppings 7,8,9

Rainbow Pasta 1
Seasonal Vegetables

Toffee Apple Pudding 1 VG & Custard 7
Mr Nourish Biscuit 1 VG
Fruit Pots VG

Roast Gammon & Gravy
Broccoli Tot 1,7 V
Jackets with a Choice of Toppings 7,8,9

Rustic Roast Potatoes,
Cabbage,
Peas

Fruit Jelly VG
Mr Nourish Biscuit 1 VG
Yoghurt 3,7, Fruit Pots VG

Beef Bolognese Pasta Bake 1,7
Loaded Bean Chilli Wedges VG
Jackets with a Choice of Toppings 7,8,9

Green Beans
Grated Carrots

Parsnip Brownie 1 VG
Mr Nourish Biscuit 1 VG
Yoghurt 3,7, Fruit Pots VG

Pork Sausages 1,6
Vegetable Sausage VG
Jackets with a Choice of Toppings 7,8,9

Chips,
Sweetcorn, Baked Beans
Cucumber Sticks

Oaty Cookie 1,15 VG
Yoghurt 3,7
Fruit Pots VG

WEEK TWO

10 Nov
1 Dec
5 Jan
26 Jan
23 Feb
16 March

Caribbean Brown Chicken
Tomato Spaghetti 1 VG
Jackets with a Choice of Toppings 7,8,9

Rice,
Carrots,
Peas

Chocolate Ice Cream 7
Mr Nourish Biscuit 1 VG
Fruit Pots VG

Cheese & Broccoli Pasta Bake 1,7 V
Buffalo Cauliflower Wings
& Wedges VG
Jackets with a Choice of Toppings 7,8,9

Seasonal Vegetables

Plum Pudding 1VG & Custard 7
Mr Nourish Biscuit 1 VG
Fruit Pots VG

Roast Chicken & Gravy
Ratatouille Puff 1,3 VG
Jackets with a Choice of Toppings 7,8,9

Rustic Roast Potatoes
Broccoli,
Carrots

Crispy Cake 1,3,7,16
Mr Nourish Biscuit 1 VG
Yoghurt 3,7, Fruit Pots VG

Beef Stew & Dumpling 1
Pesto Pasta Bake 1,7 V
Jackets with a Choice of Toppings 7,8,9

Cauliflower,
Green Beans

Apple & Cinnamon Pinwheel 1 VG
Mr Nourish Biscuit 1 VG
Yoghurt 3,7, Fruit Pots VG

Salmon Bites 1,8
Margherita Pizza 1,3,7 V
Jackets with a Choice of Toppings 7,8,9

Chips,
Peas,
Coleslaw 9

Marble Cookie 1 VG
Yoghurt 3,7
Fruit Pots VG

WEEK THREE

17 Nov
8 Dec
12 Jan
2 Feb
2 March
23 March

Macaroni Cheese 1,7 V
Sweet Potato & Chick Pea Curry VG
Jackets with a Choice of Toppings 7,8,9

Rice,
Green Beans,
Mixed Salad

Peach Crumble 1 VG & Custard 7
Mr Nourish Biscuit 1 VG
Fruit Pots VG

Chicken Noodles 1
BBQ Vegetable Burrito 1 VG
Jackets with a Choice of Toppings 7,8,9

Sweetcorn,
Peppers

Chocolate Rice Pudding 7
Mr Nourish Biscuit 1 VG
Fruit Pots VG

Roast Pork & Gravy
Vegan Sausage Roll 1 VG
Jackets with a Choice of Toppings 7,8,9

Rustic Roast Potatoes,
Green Beans,
Carrots

Fruit Jelly VG
Mr Nourish Biscuit 1 VG
Yoghurt 3,7, Fruit Pots VG

Beef Cottage Pie
Herby Tomato Pasta 1 VG
Jackets with a Choice of Toppings 7,8,9

Seasonal Vegetables

Beetroot Cake 1 VG
Mr Nourish Biscuit 1 VG
Yoghurt 3,7, Fruit Pots VG

Fish Fingers 1,8
Cheese, Carrot & Tomato Swirl 1,7 V
Jackets with a Choice of Toppings 7,8,9

Chips,
Peas, Baked Beans,
Grated Carrot

Caramel Flapjack 1,7,15 V
Yoghurt 3,7,
Fruit Pots VG

Primary 3

1 Wheat Gluten 2 Crustaceans 3 Soybean 4 Mustard 5 Sesame 6 Sulphites/Sulphur Dioxide 7 Milk 8 Fish 9 Egg
10 Peanuts 11 Molluscs 12 Celeriac/Celery 13 Nuts 14 Lupins 15 Oat Gluten 16 Barley Gluten VG Vegan V Vegetarian

Selection of Salads 9, Homemade Bread 1,3. Some of our schools may use pre prepped potatoes or vegetables on occasions. These may contain sulphites and celeriac. Please discuss with your manager.

**AVAILABLE
DAILY**



STAY 'n' PLAY

Woodchurch Primary



START

3.10pm



WELCOME

CLUB, STRUCTURED ACTIVITY OR CREATIVE PLAY*

HALF TIME

4.30pm



BRAIN BREAK

CLUB, STRUCTURED ACTIVITY OR CREATIVE PLAY



FULL TIME

6.00pm

3:10

3:45

4:30

5:00

5:45

Monday

Tuesday

Wednesday

Thursday

Friday

Sign In

Sign In

Sign In

Sign In

Sign In

Fruit snack | Activators

Fruit snack | Activators

Fruit snack | Activators

Fruit snack | Activators

Fruit snack | Activators

Laser Tag/ Ultimate Nerf
OR Tag Rugby

Construction Club
OR Football Club

Forest School/ OAA
OR Dodgeball Club

Arts & Crafts
OR Basketball Club

Cookery Club
OR Archery Club

Sign Out & Collection A

Sign Out & Collection A

Sign Out & Collection A

Sign Out & Collection A

Sign Out & Collection A

Meal time | Quiet play

Meal time | Quiet play

Meal time | Quiet play

Meal time | Quiet play

Meal time | Quiet play

Laser Tag/ Ultimate Nerf
OR Creative play

Construction Club
OR Creative play

Forest School/ OAA
OR Creative play

Arts & Crafts
OR Creative play

Cookery Club
OR Creative play

Wellbeing time/ Quiet play

Wellbeing time/ Quiet play

Wellbeing time/ Quiet play

Wellbeing time/ Quiet play

Wellbeing time/ Quiet play

Sign Out & Collection B

Sign Out & Collection B

Sign Out & Collection B

Sign Out & Collection B

Sign Out & Collection B

TEAMTHEME KENT

Please note that, where as the timing structure will remain the same, sometimes there may be occasional need for some individual activities to differ from those that are shown here

*Outdoor activities include: Forest School, Football, Monkeyball, Nerf, Adventure Playground, Goalball, Tennis, Archery, Basketball, 4Square etc.
*Creative/quiet play options include: Lego, Arts & Crafts, Makery Make, Puzzles, Board Games, Card Games, Chrome Books, Reading etc.